

# Anas Smart Road



Anas Smart Road

The future  
is now



[www.stradeanas.it](http://www.stradeanas.it)





Well in advance of Europe, the **digital transformation** of the Italian road network is beginning to take shape.

**Anas' Smart Road** program, with an investment of around **1 billion Euro** over **3,000 kilometres**, will contribute to provide the country with a **digitally advanced** and **sustainable road network**, guaranteeing **greater safety** and **comfort** for users, increased **efficiency in traffic flows** and **more secure infrastructure**.

## Future user benefits

### More Safe

Through the implementation of new technologies and services for driver assistance and self-driving, such as alerts of serious events on the road, reproduction of road signs on board of the vehicle and notification of speed limits.

### More Connected

Thanks to connectivity systems such as G5 and c-LTE DSRC, Anas' Wi-Fi and all the possible connections and correlations generated by the data that is created and exchanged while travelling along roads. All generated data is certified by the networks' managing operator.

### More Informed

Due to the mobility information that smart roads provide, users will be informed in real time on traffic conditions, accidents, roadworks and notified of alternative routes and weather conditions.

### More Green

Sustainable fuelling of road systems, the generation of energy from renewable sources and the installation of electric vehicle charging stations to develop electric mobility.

# Mission

- ◆ **Increased safety for road users** and **optimisation of the control and maintenance** of infrastructures and civil works through the use of **IoT**, **Big Data** and **Machine Learning Solutions**.
- ◆ Implementation of new connectivity services and communication standards to enable **user-infrastructure** and **vehicle-infrastructure** dialogue.
- ◆ Creation of **new real-time services for users**, such as **alerts**, **traffic control** and dedicated apps.

## Key Success Factors

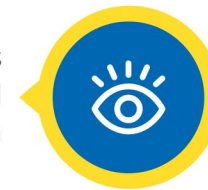


### Ongoing Innovation

Ongoing innovation through **technology scouting** and the participation in **national** and **international work groups** devoted to this issue. Cooperation with **research companies** also is a **strategic factor** in optimising infrastructures in order to ensure **new**, **reliable** and **technologically advanced services** for road users.

### Integrated Vision

To achieve an effective convergence of **all of our stakeholders'** needs and wishes, since we have gained the knowledge that a **single, integrated vision** for future **Smart Mobility** is needed, also for its integration with **Smart Cities** systems.

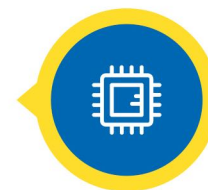


### User-Centric Focus

Focusing on users, to be understood as **travellers**, **commuters**, **workers**, **emergency operators** and **road users** in general. Focusing on users' needs and requirements during the entire length of their journey.

### Testing

A key success factor is to support innovation with **experimental tests**, **pilot projects** proposed by Research and Development **labs** and **innovative start-ups**, in order to implement the **best solutions** on the market.



# Key technologies

**Road Weather Information System (RWIS)** for real-time measurements of weather conditions and of road surfaces' quality.

**Good Vibrations**, the use of Smartphone Sensing techniques through an app that collects accelerometer data from devices in a moving vehicle and the utilization of advanced analysis algorithms and real-time pre-alerts of vibrational anomalies in infrastructures for predictive maintenance.

**Automatic Roadworks Extension Alert System (AREA)** for real-time monitoring of roadworks.

**Internet of Things (IoT)**  
**BIG DATA**  
**Artificial Intelligence (AI)**  
**V2X Systems**  
**ready for 5G**  
**ENERGY FROM RENEWABLE SOURCES**

## Main technologies and tests under way

### TEST of C-ITS Services

**V2V (Vehicle-to-Vehicle)** and **V2I (Vehicle-to-Infrastructure)** connectivity and Wi-Fi connectivity integrated in a single **RSU (Road Side Unit)**.

### Cutting-edge video analysis platforms

**Smart cameras** that enable video analysis to **check on traffic**, **road network's conditions** and, on an experimental basis, **weather** and **road surface's conditions**.

### Innovative Design

**Multi-function poles:** concept design by the "Carlo Ratti Associati" firm according to the canons of modern artistic works that **respect the natural surrounding landscape**.

### Smart Platforms

**Remote control** and **management** of the technologies and systems in the roadway, including **complex infrastructures** such as **tunnels**.